

SIEVERT®

Pro Venturix

IMITATED
SINCE 1882

**Next Generation
Overlap Burner**





Introducing Pro Venturix: The Ultimate Tool for Roofers

Pro Venturix is designed with roofers in mind, combining safety, efficiency, and durability to meet the demands of your toughest jobs.

Enhanced Safety: With effective combustion to prevent un-burnt gas buildup, Pro Venturix significantly lowers fire risks. The enclosed pilot flame keeps the flame encapsulated inside the burner housing, ensuring safer and more flexible operation.

Cost and Environmental Benefits: Using up to 87% less gas than traditional burners, Pro Venturix not only reduces your costs but also minimizes CO₂ emissions, making it a more sustainable choice.

Work Environment: The noise-reducing design keeps sound levels to a low 82 dB, creating a quieter and more comfortable work environment.

Durable Construction: Built with high-grade titanium, Pro Venturix is engineered to withstand tough conditions, ensuring long-lasting durability.

Upgrade your roofing toolkit with Pro Venturix and experience the perfect blend of safety, efficiency and durability.

SYSTEM FEATURES



ENCLOSED
PILOT FLAME



EFFECTIVE
COMBUSTION



LPG SAVING
SYSTEM



MULTI-CORE
FLAMES



NOISE
REDUCTION
SYSTEM



PRECISE
TRIGGER



HIGH GRADE
TITANIUM



HEAVY-DUTY
DURABLE



ERGONOMIC



FLAME
ADJUSTMENT

SYSTEM APPLICATIONS



DRYING



DETAIL
WATERPROOFING



HEATING



WATERPROOFING

Pro Venturix **S130/S90**

Anti-Friction Overlap Welding Burner

Designed for efficient overlap welding of 120 and 80 mm. Made of high grade titanium with the patented Pro Venturix technology, the S130/S90's unique anti-friction design allows for perfect welding results with easy use.

DID YOU KNOW?

Thanks to the slim design of the S130/S90, you can drag the burner along the membrane without straining your body. This makes Sievert Pro Venturix one of the most ergonomic systems on the market.


Pro Venturix S90
Pro Venturix S130

TECHNICAL DATA

S130/S90

Connection	M20x1
Dimensions	130/90 x 22 mm
Working Pressure	3,7 bar
Effect	14,2 kW / 8,3 kW
Gas Consumption	1100 g/h / 650 g/h
Noise Level	80 dB

FEATURES


**ENCLOSED
PILOT FLAME**

**EFFECTIVE
COMBUSTION**

**SLIM BURNER
HOUSE**

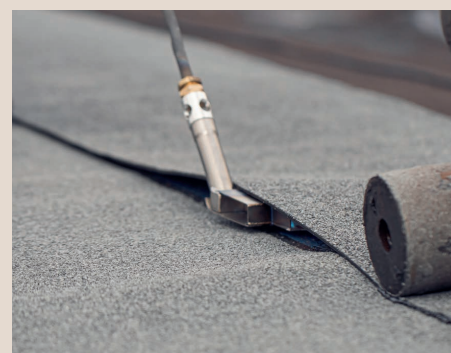
**LPG SAVING
SYSTEM**

**MULTI-CORE
FLAMES**

**HEAVY-DUTY
DURABLE**

**NOISE
REDUCTION
SYSTEM**

**ANTI-FRICTION
DESIGN**

**HIGH GRADE
TITANIUM**


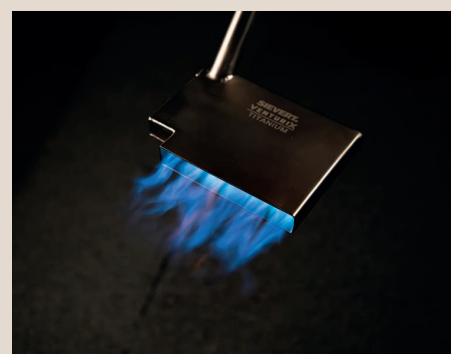
SLIM ANTI-FRICTION DESIGN

130/90 mm burner house for precise results and perfect weld width. Designed to reduce friction when in contact with waterproofing membranes for smoother applications.



ENHANCED SAFETY

Enhanced safety and efficiency with 4-6 encapsulated pilot flames. Ensures a stable flame and consistent heat distribution in any condition or environment.



LPG SAVING SYSTEM

Up to 87% lower gas consumption compared to traditional burners due to effective combustion and multi-core flames, thus lowering operating costs and CO₂ emissions.

Pro Venturix

D60/C60

Precision Membrane Welding Burner

Designed for efficient detail welding near structures that are sensitive to heat. Made out of high grade titanium with the patented Pro Venturix technology, the C60/D60's unique design has an ergonomic weight distribution and allows the user to get close to the welding area for a perfect result.



DID YOU KNOW?

The Venturix system is designed to operate optimally at 2-4 bar, ensuring effective combustion and keeping the pilot flame safely contained inside the burner housing for maximum safety. Sievert recommends using a regulator for best performance and security.


Pro Venturix C60

Pro Venturix D60

TECHNICAL DATA

D60/C60

Connection	G 3/8"-19 / M20x1
Burner Diameter (ø)	60 mm
Working Pressure	3,7 bar
Effect	12,6 kW
Gas Consumption	980 g/h
Noise Level	82 dB

FEATURES


**ENCLOSED
PILOT FLAME**

**EFFECTIVE
COMBUSTION**

**NOISE
REDUCTION
SYSTEM**

**LPG SAVING
SYSTEM**

**MULTI-CORE
FLAMES**

**HEAVY-DUTY
DURABLE**

**HIGH GRADE
TITANIUM**


EFFECTIVE COMBUSTION

Achieves full combustion with primary and secondary airflow, enhancing safety and efficiency while reducing unburnt gas risk for detailed work.



ENHANCED SAFETY

Enhanced safety and efficiency with 4 encapsulated pilot flames. Ensures a stable flame and consistent heat distribution.



LPG SAVING SYSTEM

Up to 87% less gas than traditional burners through effective combustion and multi-core flames, reducing costs and CO₂ emissions.

**SIEVERT®**

Pro Venturix **Hot Air**

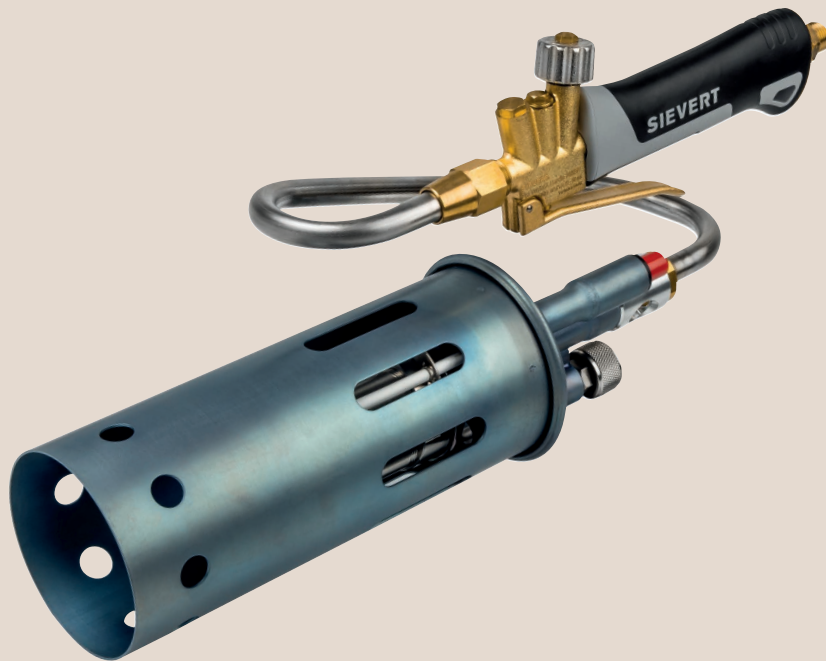
Hot Air Membrane Welding Burner

Engineered for maximum safety and efficiency, the Pro Venturix Hot Air torch is perfect for tasks such as drying, adhesive application, waterproofing and targeted heating applications.

With its robust stream of hot air, you can bid farewell to the hazards of open flames, ensuring a secure workspace.

DID YOU KNOW?

Boost airflow by over 1000% with compressed air! This powerful solution dries materials faster while reducing the risk of leaves or debris catching fire, minimizing the chance of accidents. The added air pressure extends the burner's heat range, allowing you to work safely from a greater distance.



TECHNICAL DATA

398101/398147

Connection	BSP 3/8" LH / UNEF 9/16" LH
Burner Diameter (ø)	80 mm
Working Pressure	2-4* bar
Effect	9-15 kW
Gas Consumption	700-1180 g/h
Noise Level	81 dB

*When operating at 4 bar, always use compressed air to still maintain a hot air stream.

FEATURES



**ENCLOSED
PILOT FLAME**



**EFFECTIVE
COMBUSTION**



**PRECISE
TRIGGER**



**LPG SAVING
SYSTEM**



**MULTI-CORE
FLAMES**



**AIR VALVE
ADJUSTMENT**



**NOISE
REDUCTION
SYSTEM**



**PIEZO
IGNITION**



**ERGONOMIC
HANDLE**



**HOT AIR
STREAM**



**HIGH GRADE
TITANIUM**



**HEAVY-DUTY
DURABLE**



PIEZO IGNITION

Effortlessly ignites the torch. Enjoy reliable, one-click lighting for quick and convenient starts and workflow.



HOT AIR STREAM

Flame completely encapsulated inside the burner housing, providing only hot air stream, a feature that reduces the risk of accidental fire hazards.



COMPRESSED AIR

Ready to be used with compressed air to boost airflow by over 1000%. This allows for faster drying/heating applications.

Pro Venturix Components

PRO VENTURIX C60 BURNER 496000

Connection	M20x1
Burner Diameter (ø)	60 mm
Working Pressure	3,7 bar
Effect	14,2 kW
Gas Consumption	980 g/h
Noise Level	82 dB



PRO VENTURIX D60 BURNER 356002

Connection	G 3/8"-19
Burner Diameter (ø)	60 mm
Working Pressure	3,7 bar
Effect	12,6 kW
Gas Consumption	980 g/h
Noise Level	82 dB



PRO VENTURIX S90 BURNER 696090

Connection	M20x1
Dimensions	90 x 22 mm
Working Pressure	3,7 bar
Effect	8,3 kW
Gas Consumption	650 g/h
Noise Level	80 dB



PRO VENTURIX S130 BURNER 696000

Connection	M20x1
Dimensions	130 x 22 mm
Working Pressure	3,7 bar
Effect	14,2 kW
Gas Consumption	1100 g/h
Noise Level	80 dB



PRO VENTURIX HANDLE 348876

Connection	BSP 3/8" LH
Connection (Neck Tube)	G 3/8"-19
Working Pressure	1,5-4 bar



PRO VENTURIX FIXED REGULATOR INCL HFV 309223

Connections	POL / BSP 3/8" LH
Working Pressure	3,7 bar
Maximum Capacity	5-12 kg/h
HFV Included	Yes



TITANIUM NECK TUBE 950 355801

Connection (handle)	G 3/8"-19
Connection (burner)	M20x1
Neck tube length	950 mm
Neck tube angle	55°



TITANIUM STRAIGHT NECK TUBE 750 355669

Connection (handle)	G 3/8"-19
Connection (burner)	M20x1
Neck tube length	750 mm
Neck tube angle	0°



Pro Venturix Burner Kits

PRO VENTURIX C60 HOSEREG BURNER KIT POL 348100

Handle	348876 (BSP 3/8" LH)
Burner	496000
Neck Tube	355601
Regulator	309223 (Fixed 3,7 Bar, POL, BSP 3/8")
Propane Hose	711511 (BSP 3/8"LH, 10 m)
Neck Tube Stand	717241
Turning Adaptor	754207



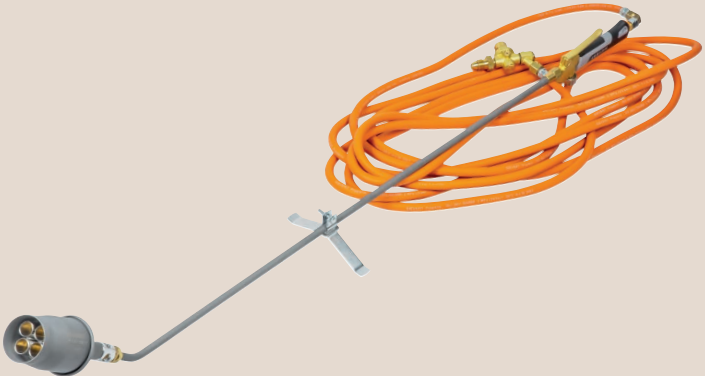
PRO VENTURIX C60 HOSEREG BURNER KIT POL 348101

Handle	348876 (BSP 3/8" LH)
Burner	496000
Neck Tube	355501
Regulator	309223 (Fixed 3,7 Bar, POL, BSP 3/8")
Propane Hose	711511 (BSP 3/8"LH, 10 m)
Neck Tube Stand	717241
Turning Adaptor	754207



PRO VENTURIX C60 HOSEREG BURNER KIT POL 348102

Handle	348876 (BSP 3/8" LH)
Burner	496000
Neck Tube	355801
Regulator	309223 (Fixed 3,7 Bar, POL, BSP 3/8")
Propane Hose	711511 (BSP 3/8"LH, 10 m)
Neck Tube Stand	717241
Turning Adaptor	754207



PRO VENTURIX D60 HOSEREG BURNER KIT POL 348103

Handle	348876 (BSP 3/8" LH)
Burner	356002
Regulator	309223 (Fixed 3,7 Bar, POL, BSP 3/8")
Propane Hose	711511 (BSP 3/8"LH, 10 m)
Neck Tube Stand	717241
Turning Adaptor	754207



PRO VENTURIX D60 HOSEREG BURNER KIT DIN KOMBI 348104

Handle	348876 (BSP 3/8" LH)
Burner	356002
Regulator	306315 (1-4 Bar, DIN Kombi, BSP 3/8")
Propane Hose	770038 (BSP 3/8"LH, 10 m)
Neck Tube Stand	717241



PRO VENTURIX D60 BURNER KIT UNEF 9/16" LH 348160

Handle	348897 (UNEF 9/16" LH)
Burner	356002
Neck Tube Stand	717241



Pro Venturix Burner Kits

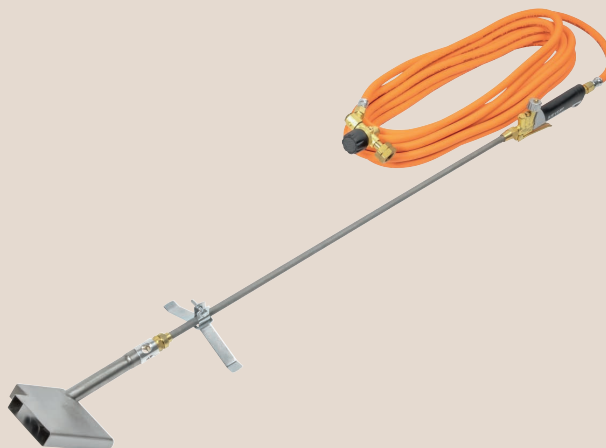
PRO VENTURIX S130 HOSEREG BURNER KIT POL 348200

Handle	348876 (BSP 3/8" LH)
Burner	696000
Neck Tube	355669
Regulator	309223 (Fixed 3,7 Bar, POL, BSP 3/8")
Propane Hose	711511 (BSP 3/8"LH, 10 m)
Neck Tube Stand	717241
Turning Adaptor	754207



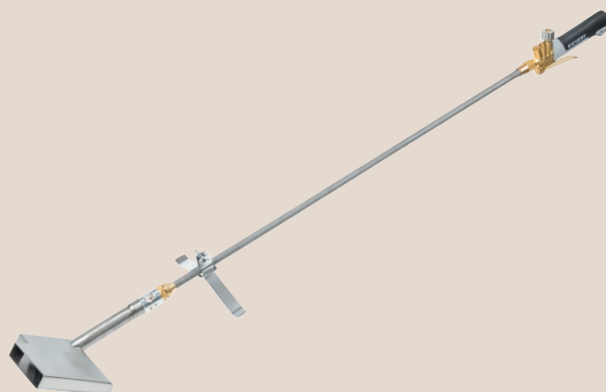
PRO VENTURIX S90 HOSEREG BURNER KIT DIN KOMBI 348290

Handle	348876 (BSP 3/8" LH)
Burner	696090
Neck Tube	355669
Regulator	306315 (1-4 Bar, DIN Kombi, BSP 3/8")
Propane Hose	770038 (BSP 3/8"LH, 10 m)
Neck Tube Stand	717241



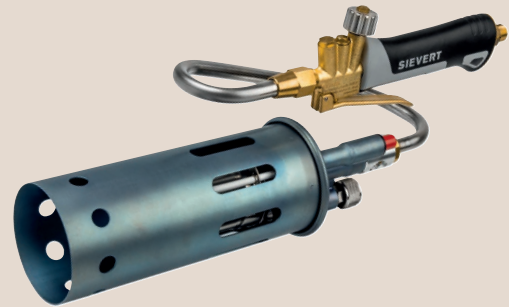
PRO VENTURIX S90 BURNER KIT UNEF 9/16" LH 348297

Handle	348897 (UNEF 9/16" LH)
Burner	696090
Neck Tube	355669
Neck Tube Stand	717241



PRO VENTURIX HOT-AIR BURNER KIT BSP 3/8" LH 398101

Handle	348876 (BSP 3/8" LH)
Burner	398100
Air Quick Connection	Yes



PRO VENTURIX HOT-AIR BURNER KIT UNEF 9/16" LH 398147

Handle	348897 (UNEF 9/16" LH)
Burner	398100
Air Quick Connection	Yes



 INNOVATED
IN SWEDEN

SIEVERT®

©Sievert AB. All rights reserved. Sievert is a registered trademark of Sievert AB.
Sievert AB and its partners reserve the right for any misprints.